

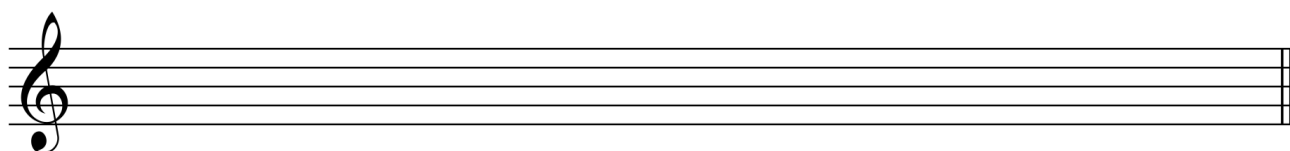
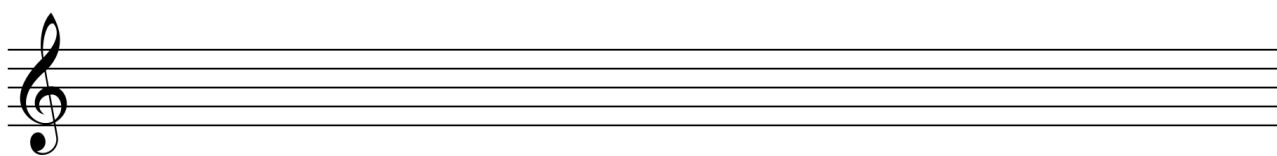
NAVODILO ZA DELO NA DALJAVO – 6. RAZRED NGL, 8. TEDEN

GLASBENA ŠOLA RAVNE NA KOROŠKEM

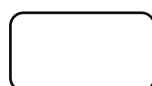
DATUM: 11. 5. 2020

PONOVIMO

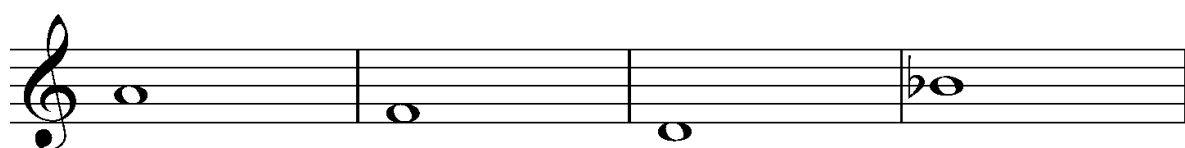
1. Na tonu **es1** napiši kromatično lestvico navzgor in navzdol.



2. Zapiši molovo lestvico.



3. Reši akorde.



zm5/3

m6

d6/4

d5/3

4. Reši intervale.



A musical staff in treble clef with a key signature of one flat (Bb). It contains five measures, each with a single note. Below each measure is a label and an arrow indicating the interval:

- zv4 ↑ (zv4 up)
- m3 ↓ (m3 down)
- č5 ↑ (č5 up)
- v7 ↑ (v7 up)
- m6 ↓ (m6 down)

5. V melodični vaji označi in poimenuj D7 in njegove obrnitve.



A melodic exercise in 4/4 time, key of D major (one sharp). The melody consists of eighth and quarter notes, with a final quarter rest. The notes are: D4, E4, F#4, G4, A4, B4, C#5, D5, C#5, B4, A4, G4, F#4, E4, D4.

Rešene naloge mi pošlji v pregled na moj e-mail ela.skarlovnik@gmail.com

ŽELIM TI USPEŠNO DELO IN TE LEPO
POZDRAVLJAM.
UČITELJICA ELA SKARLOVNIK

