

NAVODILO ZA DELO NA DALJAVO – 2. RAZRED NGL, 8. TEDEN

GLASBENA ŠOLA RAVNE NA KOROŠKEM

DATUM: 11. 5. 2020

## PONOVIMO

1. ZAPIŠI IME NOTE S TONSKO ABECEDO.

A musical staff with six notes. The first note is a treble clef with a sharp sign and a note on the first line (F#4). The second note is a bass clef with a note on the first line (F3). The third note is a bass clef with a note on the second line (G2). The fourth note is a bass clef with a sharp sign and a note on the second line (G#2). The fifth note is a bass clef with a note on the second line (G2). The sixth note is a bass clef with a note on the second line (G2). Below each note is an empty yellow rounded rectangle for labeling.

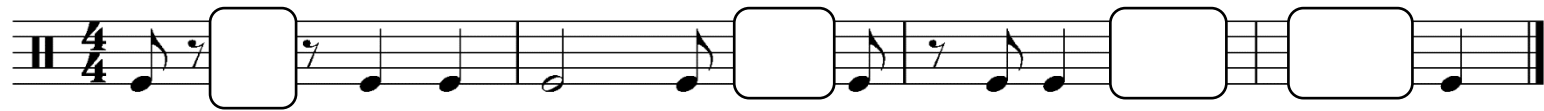
2. ZAPIŠI CELI TON IN POLTON V SMERI, KI JO KAŽE PUŠČICA.

A musical staff with four notes. The first note is a treble clef with a note on the first line (F4). Below it is an upward arrow with '1/2' above it. The second note is a bass clef with a note on the first line (F3). Below it is a downward arrow with '1/2' above it. The third note is a treble clef with a note on the first line (F4). Below it is an upward arrow with '1' above it. The fourth note is a bass clef with a note on the first line (F3). Below it is a downward arrow with '1' above it.

3. ZAPIŠI F – DUR LESTVICO IN JO OZNAČI: CELI TONI IN POLTONI, STOPNJE Z RIMSKIMI ŠTEVILKAMI, TETRAKORDA IN PREDZNAK.

An empty musical staff with a treble clef, intended for writing the F major scale.

#### 4. DOPOLNI RITMIČNO VAJO Z NOTAMI ALI PAVZAMI.



#### 5. KAJ POMENIJO NASLEDNJI IZRAZI? NAPIŠI PO SLOVENSKO.

a) mezzoforte (mf) - \_\_\_\_\_

b) decrescendo - \_\_\_\_\_

c) adagio - \_\_\_\_\_

d) allegro - \_\_\_\_\_

e) ritardando - \_\_\_\_\_

REŠENE NALOGE MI POŠLI V PREGLED NA MOJ E-MAIL

[ela.skarlovnik@gmail.com](mailto:ela.skarlovnik@gmail.com)

ŽELIM TI USPEŠNO DELO IN TE LEPO  
POZDRAVLJAM.  
UČITELJICA ELA SKARLOVNIK

