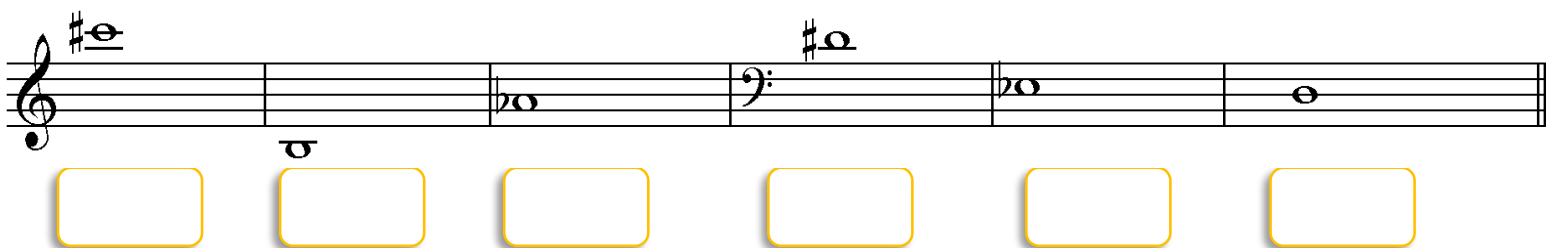


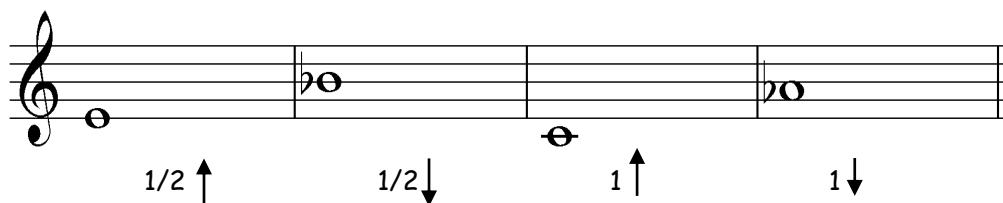
PONOVIMO

1. ZAPIŠI IME NOTE S TONSKO ABECEDO.



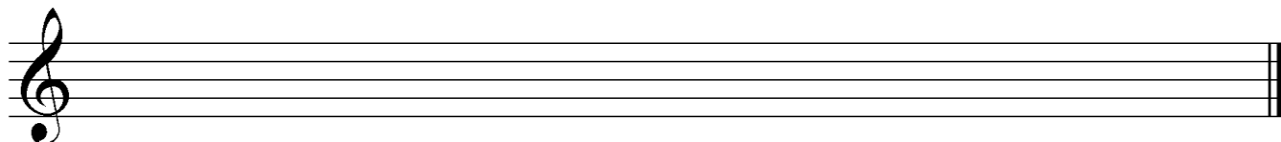
A musical staff with six measures. The first measure has a treble clef and a sharp sign above the staff. The notes are: G4 (treble), C4 (bass), E4 (treble), G4 (bass), B4 (treble), and D5 (treble). Below each note is an empty yellow box for labeling.

2. ZAPIŠI CELI TON IN POLTON V SMERI, KI JO KAŽE PUŠČICA.



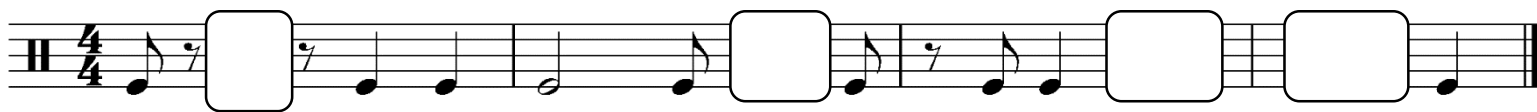
A musical staff with four measures. The notes are: G4, B4, A4, and G4. Below the staff are arrows indicating intervals: 1/2 up, 1/2 down, 1 up, and 1 down.

3. ZAPIŠI F – DUR LESTVICO IN JO OZNAČI: CELI TONI IN POLTONI, STOPNJE Z RIMSKIMI ŠTEVILKAMI, TETRAKORDA IN PREDZNAK.



An empty musical staff with a treble clef, intended for writing the F major scale.

4. DOPOLNI RITMIČNO VAJO Z NOTAMI ALI PAVZAMI.



5. KAJ POMENIJO NASLEDNJI IZRAZI? NAPIŠI PO SLOVENSKO.

a) MEZZOFORTE (mf) - _____

b) DECRESCENDO - _____

c) ADAGIO - _____

d) ALLEGRO - _____

e) RITARDANDO - _____

SVOJE ZNANJE PREVERI TUDI V MG 2 IN REŠI DOMAČE NALOGE NA STRANI 77.

PRAV TAKO V MG 2 DOPOLNI TAKTE, NARIŠI TAKTNIČE IN SESTAVI RITMIČNE VAJE- NA STRANI 78.

ŽELIM TI USPEŠNO DELO.

NASLEDNJI TEDEN SLEDI PREVERJANJE ZNANJA!

LP Alenka Mori